

## CONDUCTOR CLAMP – PUSH PULL TYPE

### Gripper and Bearing Type Available

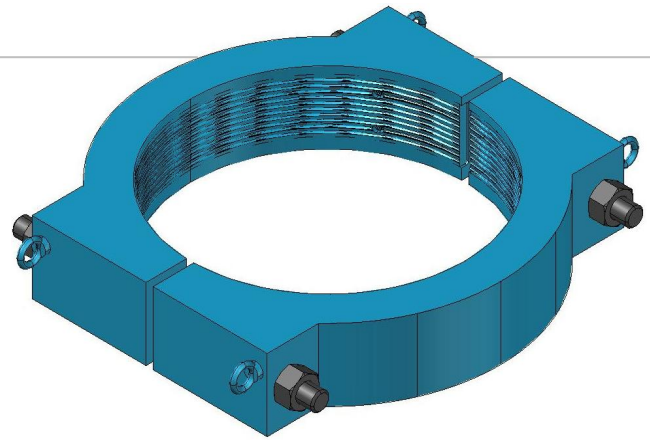
Customised to suit on request

ICON Conductor Clamps are designed to support all standard size drilling conductors from 13 3/8" to a maximum size of 36" in conjunction with the ICON T-series Push Type Conductor Tensioner Systems and also tensioners from other manufacturers.

ICON supplies two standard types of Conductor Clamp - Gripper type (Gxxx series) and Bearing type (Bxxx series).

#### Gripper Type:

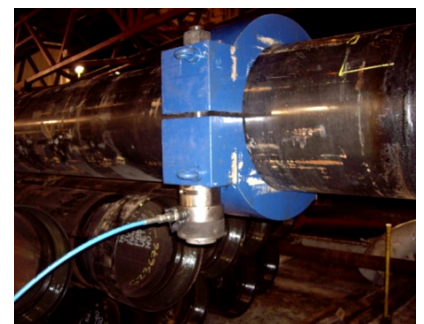
The Gripper Type conductor clamp can grip the conductor in any position other than on the connector. This avoids the need to accurately determine the space out and setting depth of the conductor.



**Conductor Clamp Gripping Type**

ICON Gripper Type Conductor Clamp				
Model	Conductor Diameter		Load Capacity Tonnes	Dimension L x W x H [mm]
	Imperial (inches)	Metric (mm)		
G36	36"	914	230	1362 x 1136 x 200
G30	30"	762	230	1236 x 1010 x 200
G22	22"	559	230	1006 x 780 x 200
G20	20"	508	227	956 x 730 x 200
G1338	13 3/8"	340	150	787 x 561 x 200

Note: The Gripper Type conductor clamp package comes with a bolt tensioning system.



**Off-line Installation Ability**

#### Bearing Type:

The Bearing Type clamp bolts around the conductor and bears on a pre-welded load ring or the underside of the wellhead. The clamp sits down on top of an insert bush.

The Bearing Type clamps are lower cost and do not require any special skills to install. The load ring is usually pre-attached to the upper conductor joint.

ICON Bearing Type Conductor Clamp				
Model	Conductor Diameter		Load Capacity Tonnes	Dimension L x W x H [mm]
	Imperial (inches)	Metric (mm)		
B36	36"	914	230	1260 x 1120 x 150
B30	30"	762	230	1108 x 968 x 150
B22	22"	559	230	905 x 770 x 150
B20	20"	508	227	854 x 718 x 150
B1338	13 3/8"	340	150	683 x 546 x 150



**Typical Conductor Gripper Clamp Installation**